

## DEF PUMP BLANKET INSTALLATION GUIDE

### #1. Identify the three blanket components

- A. Top
- B. Door
- C. Body

### #2. Install the door first by sliding it over the DEF door frame

- A. Make sure the door blanket is square on the frame.



- B. Slide the blanket back to the pump body as far as you can
- C. Make sure the four flaps are flat to the pump body
- D. Make sure the magnets on the hinge side of the door are secured to the door frame.

- E. With the door held squarely in place mark the two grommets on the door frame with a marker.



- F. Remove door blanket and set it off to side  
G. With a center punch locate the center of the hole that was marked on the side of door frame and make a divot, Do the same to the other mark.  
H. Drill two 3/8" holes where the center punch divots are.

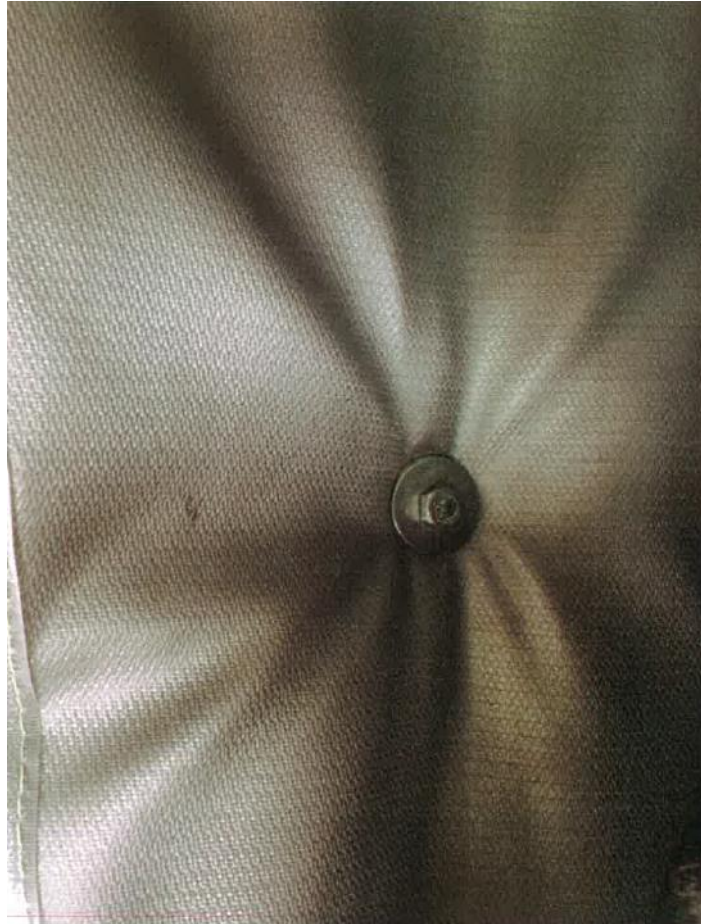


I. Remove any burs left by drilling

#3. Install the door blanket.

A. Repeat steps #2 A. B. C. D.

B. Use two  $\frac{1}{4}$ " X  $\frac{3}{4}$ " long bolts with two washers, one on each side. Bolt the door blanket to the door frame.



C. On the inside of door frame it may be necessary to remove a small piece of insulation to get the washer and lock nut on the bolt.

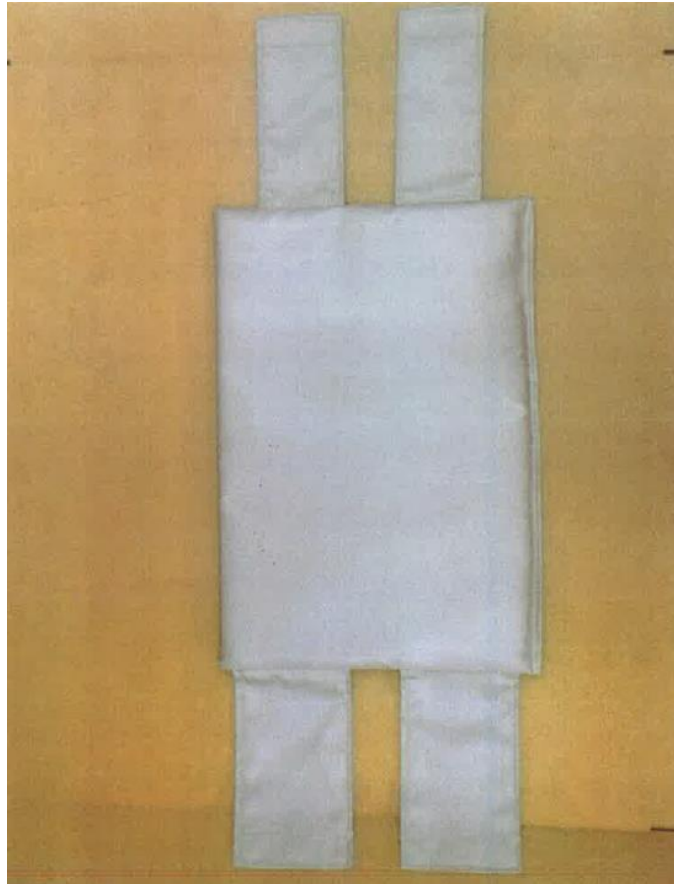


D. Tighten the two bolts to 2-3 foot pounds of torque ( use caution when tightening the bolts not to over tighten them)

#4. Install the top blanket next.

A. The top blankets fit both Right and Left pumps but the narrow flaps must face the dispenser side of the pump.

Toward Dispenser  
Narrow End

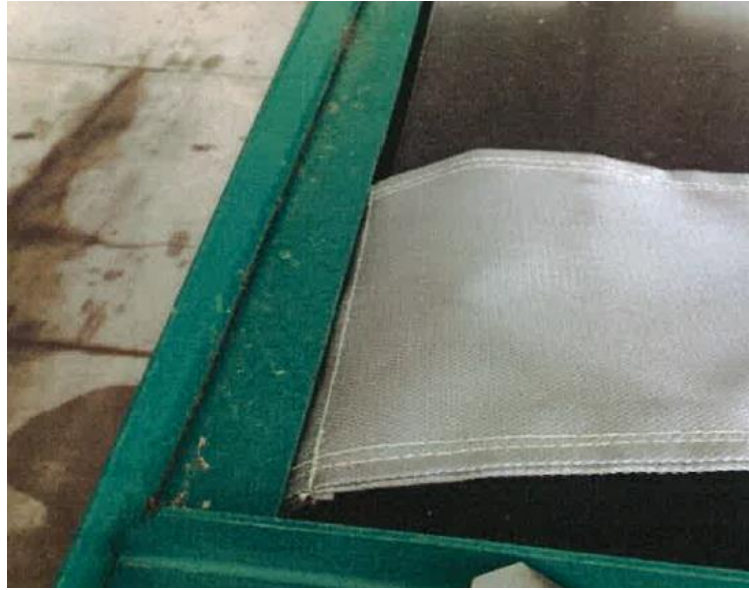


Back Side  
Wide End

B. You will need a 6' ladder to reach the top of the pump

C. Place the blanket on top of the pump. Note: The Velcro must face down and narrow flaps face toward dispensers.

- D. Slide the four Velcro tabs through opening between the pump and face bracket,  
(The bracket can be adjusted so the flaps slide through if necessary.)



- E. Pull the four flaps down so the blanket lays flat and the flaps are straight.



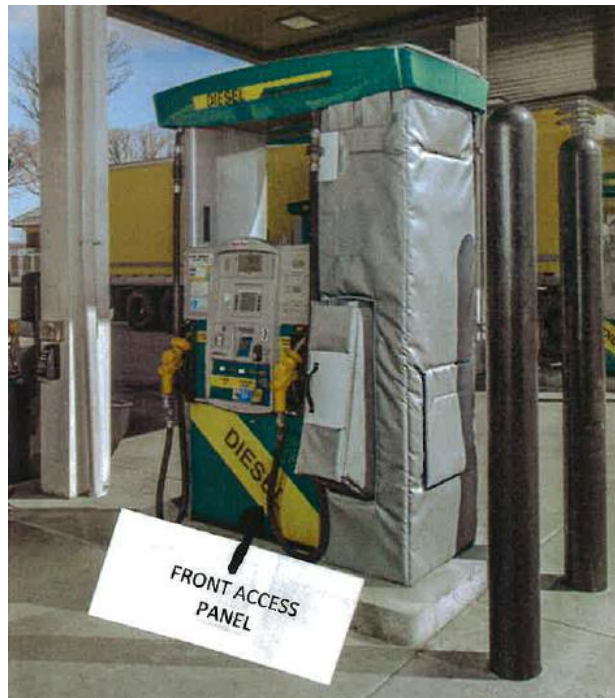
#5. Installing the DEF Pump body blanket. When handling this blanket use care it cannot be dragged on the pavement, this will scuff off the chemical resistant coating and damage the blanket.

- A. Start at the front of the pump with the door cutout, one person can hold up this portion while the other person holds up the remaining back portion using the black storage tabs, standing at the back corner. Note use care **DO NOT DRAG THE BLANKET ON THE GROUND!** This will damage the chemical resistant coating.
- B. With the blanket held up slide the blanket over the door, continue holding the blanket up with the storage tabs until the blanket is secured in the front with the Velcro tab.

- C. Go around the back and pass the remaining portion of the blanket over the top of the dispenser, working the excess blanket to the front making the four corners lineup.
- D. Pull the blanket tight together and fasten the Velcro tab to the blanket. You can let go of the storage tabs at this time.
- E. Pull the Velcro flaps from the top blanket out to expose them.  
Work the DEF blanket up so the bottom of the blanket is just off the ground then fasten the Velcro tabs from the top blanket to Velcro on the DEF body blanket to secure the top.
- F. Adjust door opening so there are no gaps and a tight fit around the door by adjusting the Velcro door tabs under the body blanket.

#### #6 Installing the two base synch belts.

- A. Remove the front and rear access panels from the diesel pump cabinet.



- B. Take upper 4' belt (on the back side) and slide it through the upper D ring (on the front side) snug it up.
- C. Do the same as step B with the lower belt.
- D. Replace the two diesel pump cabinet panels.